



AMERICAN FLOOR PRODUCTS COMPANY, INC.

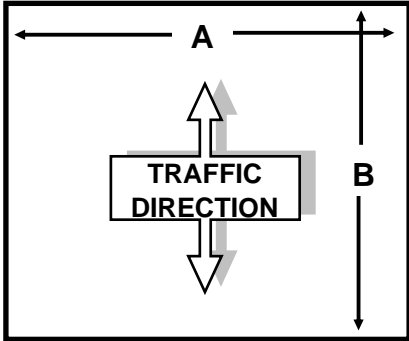
AFCO-USA

P.O. BOX 7055 • Gaithersburg, Maryland 20898 -7055 • 301-987-0490 • Fax 301-987-0422
 email: sales@afco-usa.com • Web Site: www.afco-usa.com

CUSTOMER P.O. #

CORD[®] Lobby Carpet (CM-1727)

ALL SIZES SHOWN ARE INSIDE FRAME DIMENSIONS

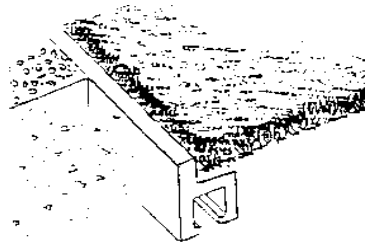
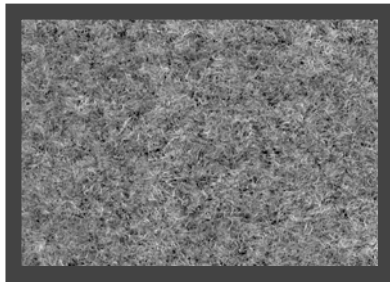


A x B
Type of Frame:
Style of Frame:
Type of Mat:
Color of Mat:

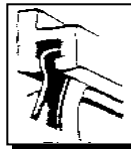
OPTIONAL FRAMES: Separate Shop Drawings



Cross Section of Bevel Edge (Optional)



Anchor Pin Detail



SPECIFICATIONS

Manufacturing Process:	Tufted	
Surface Composition (texture):	Cut-pile	
Face Fiber:	100% nylon (novalis)	
Face Weight:	26.5 oz./square yard	
Density of Pile:	0.102	
Number of Tufts/ square inch:	191,770	
Total Weight:	92.0 oz./square yard	
Primary Backing:	Non-woven polyester	
Secondary Backing:	Recycled rubber/ vinyl compound	
Pile Height:	0.27 inch	
Total Height:	0.35 inch	
Required Recess-Depth:	0.31 inch	
Width:	6'7" (2 meters)	
Country of Origin:	European Community	
Static Weight Test	Compression:	5.2 mm
	Impression:	0.4 mm
	Visible Impression:	3.5 mm
Electrostatic Properties:	Permanently anti-static (<2 kv)	
Acoustical Properties:	+33 db	
Flammability:	Class I	Passes the pill-test (DOC-FF-1-70)

Color Fastness:

To Light (U.V.stability)	Good 7 - 8 (8= No change)
To Water	Good 4 - 5 (5= No change)
To Salt Water	Good 4.5 (5= No change)
To Rubbing (Traffic)	Good 4.5 (5= No change)

JOB NAME:	ITEMS	SELECTION QUANTITY
JOB NUMBER:		
CONTRACTOR:		
ARCHITECT:		
DEALER:		
APPROVAL SIGNATURE: Date:	DRAWN BY:	